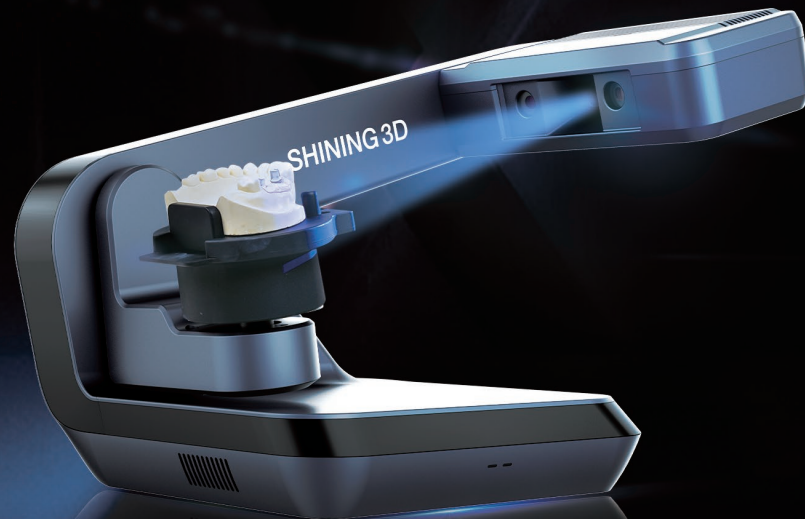


SHINING 3D
DENTAL

AutoScan-DS-EX Pro(H)

Embrace The 5.0 MP Era



Meet AutoScan-DS-EX Pro(H)

AutoScan-DS-EX Pro(H), developed and manufactured by SHINING 3D, is a 3D dental scanner with powerful functions for multiple applications covering scans of impressions, plaster models, articulators, implant abutments, etc. Its high-resolution cameras, advanced algorithms, and user-friendly interface bring you with superior data quality with optimal experience.



SHINING3D

Advanced Desktop Scanner



Ultra-high Accuracy

Scan accuracy $\leq 8 \mu\text{m}$ assures reliable scan result, satisfying the requirement of various applications in dental industry completely.



Unparalleled Details

Equipped with dual 5.0 MP high resolution cameras, AutoScan-DS-EX Pro(H) can capture every detail of the components meticulously.



Fast Speed

Bite(3shot) 6.5s
Upper/Lower(10 shot) 14s
1~4 Dies(18shot) 21.5s
5~8 Dies(22shot) 25.5s
Impression(28shot) 31s

Powerful Software

Flexible Workflow

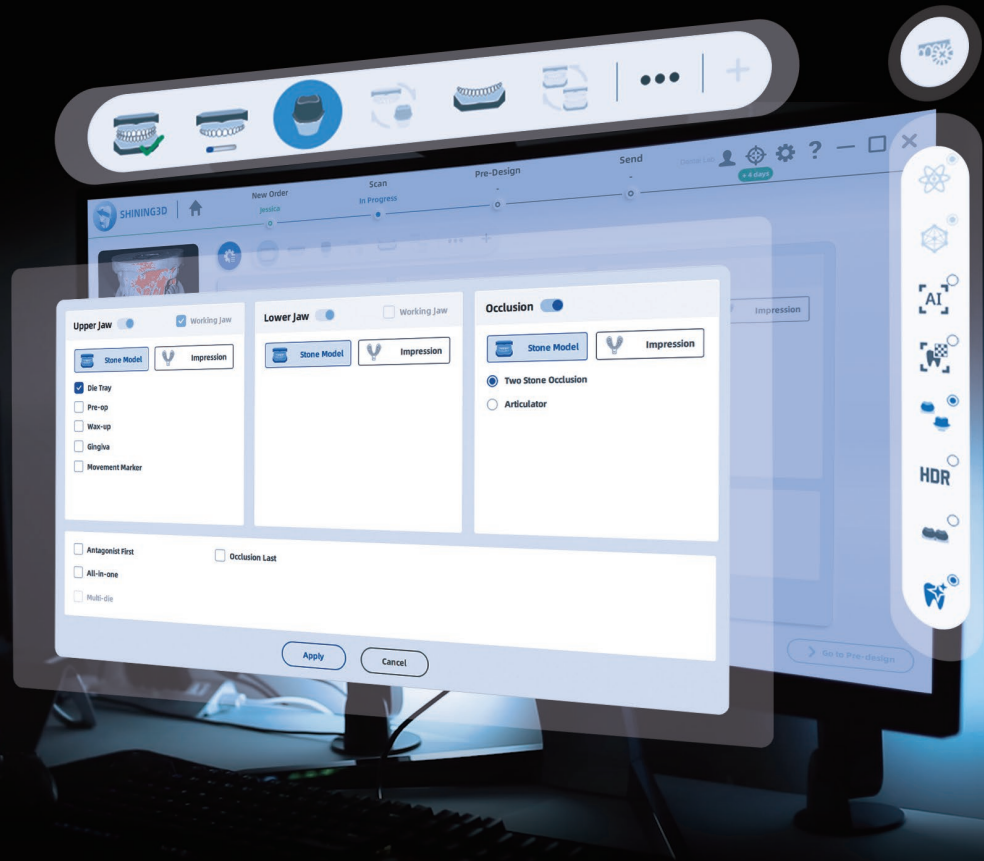
Set up your own workflow as you prefer, increasing work efficiency like never before, all-in-one and triple tray are available to get complete scan data with less steps.

Backstage Data Processing

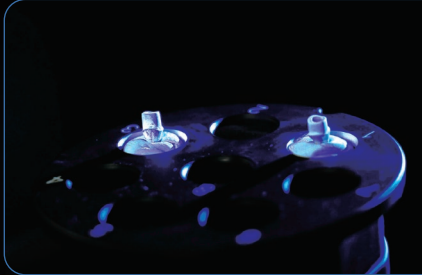
Scan and backstage data processing can be carried out simultaneously, making the whole process more efficient.

Versatile Scan Modes

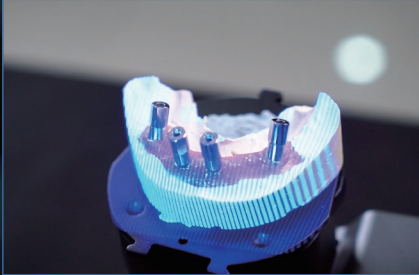
The new software associated with AutoScan-DS-EX Pro(H) can support versatile scan modes, including Multi Path Scan, High Quality Scan, AI Scan, Texture Scan, HDR Mode Scan, Reduce High Brightness Scan, etc.



Applications



Implant Abutment



Implant Bridge



Scanbody



Texture



Model



Articulator



Full Denture



Impression



Post and Core

Technical Specifications

Model	AutoScan-DS-EX Pro(H)
Camera Resolution	2*5.0 MP
Accuracy	≤ 8 μm
Scan Time	Bite(3shot) 6.5s, Upper/Lower(10 shot) 14s, 1~4 Dies(18shot) 21.5s, 5~8 Dies(22shot) 25.5s, Impression(28shot) 31s
Articulator Scan	Support articulator transfer
Output Format	STL, PLY, OBJ
Light Source	Blue Light
Dimension	260x270x420 mm
Weight	5.0 Kg
Interface	USB 3.0
Power Supply	DC 24V

*Notice: SHINING 3D reserves the right to introduce modifications or alterations to any of the specifications and images used in this document.